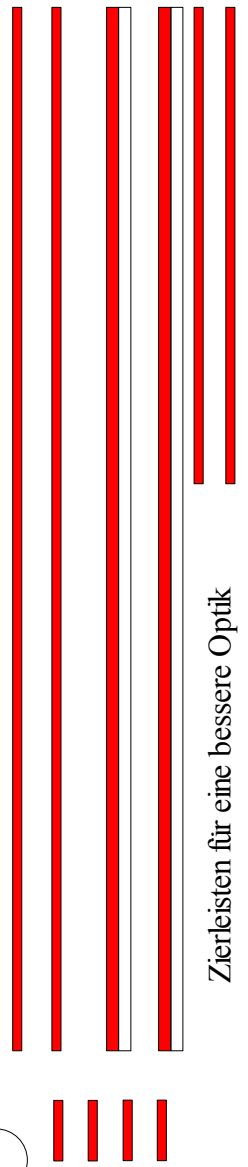


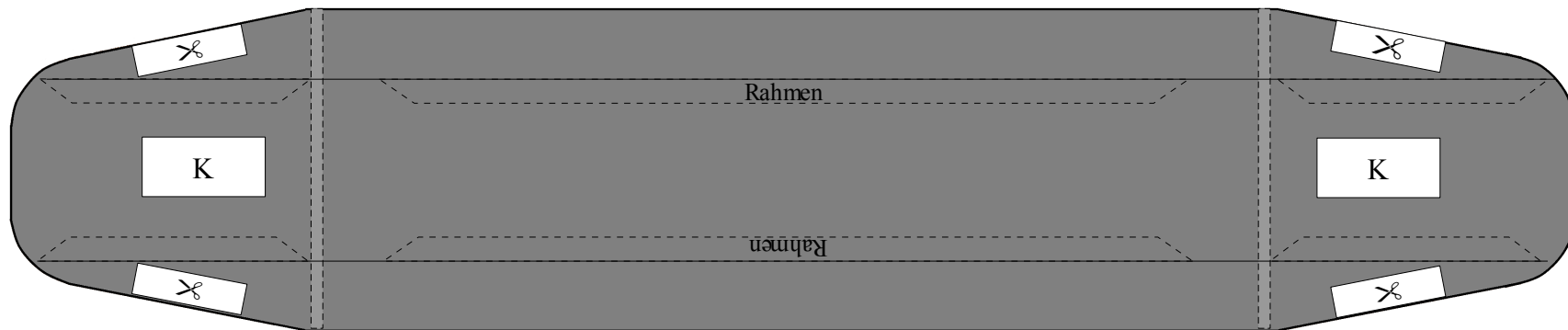
Lindner TW Nr.: 48 der Halleschen Strassenbahn Baujahr 1914



1



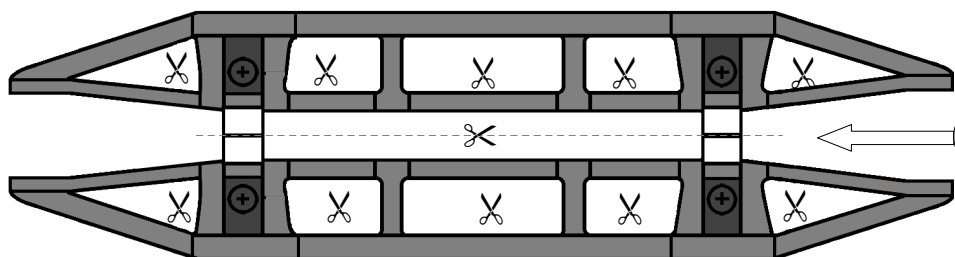
Zierleisten für eine bessere Optik



1a

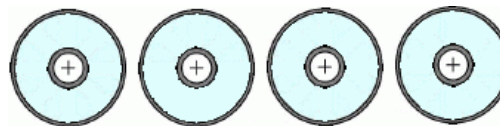


F2

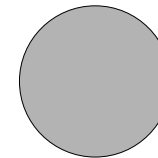
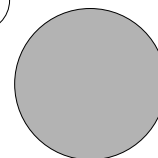
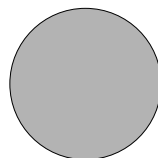


F2

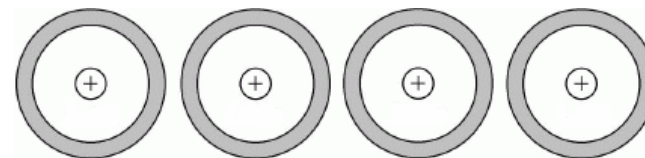
R1



R3

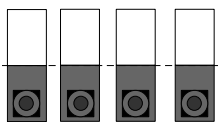


R2

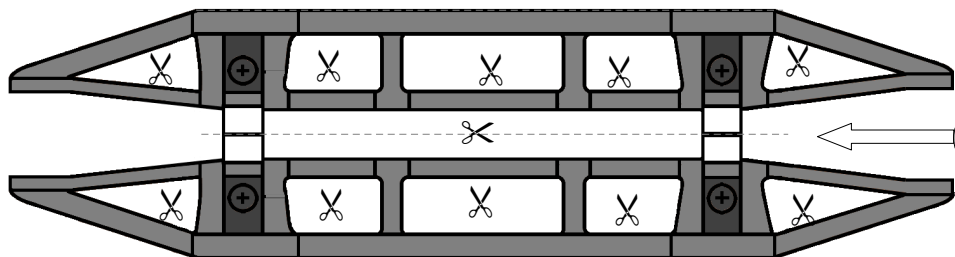


Achsen aus Zahnstocher

Achshalter



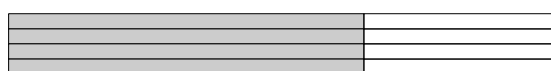
F1



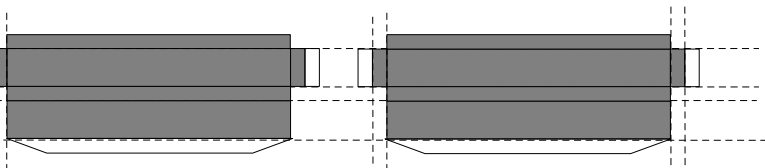
F2

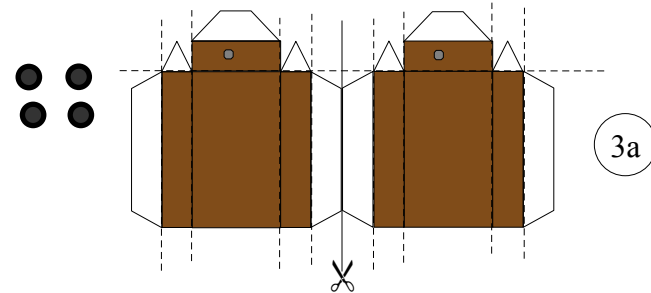
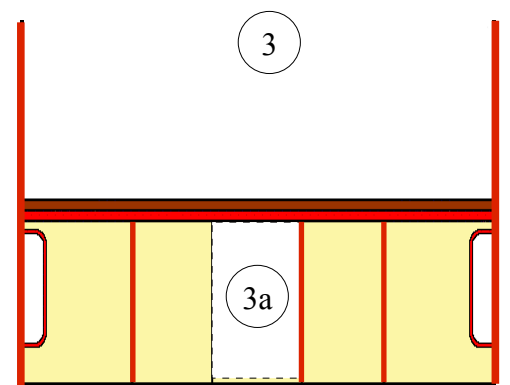
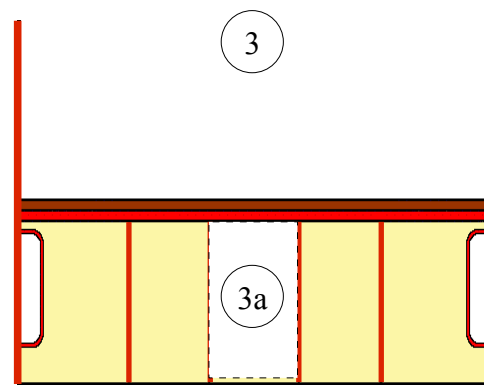
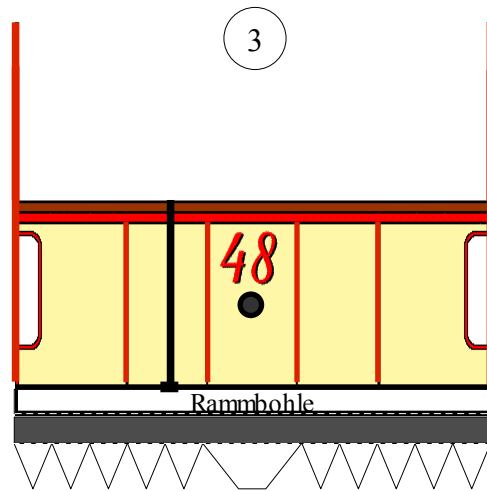
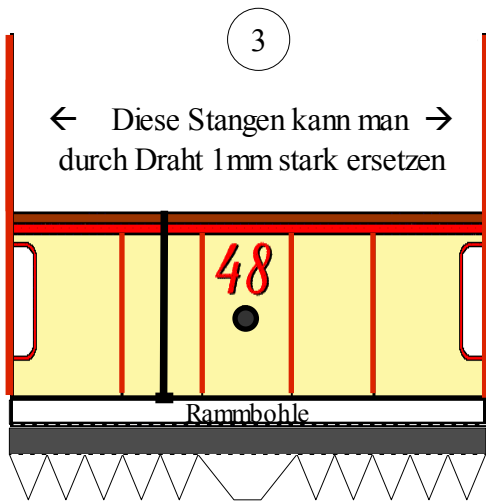
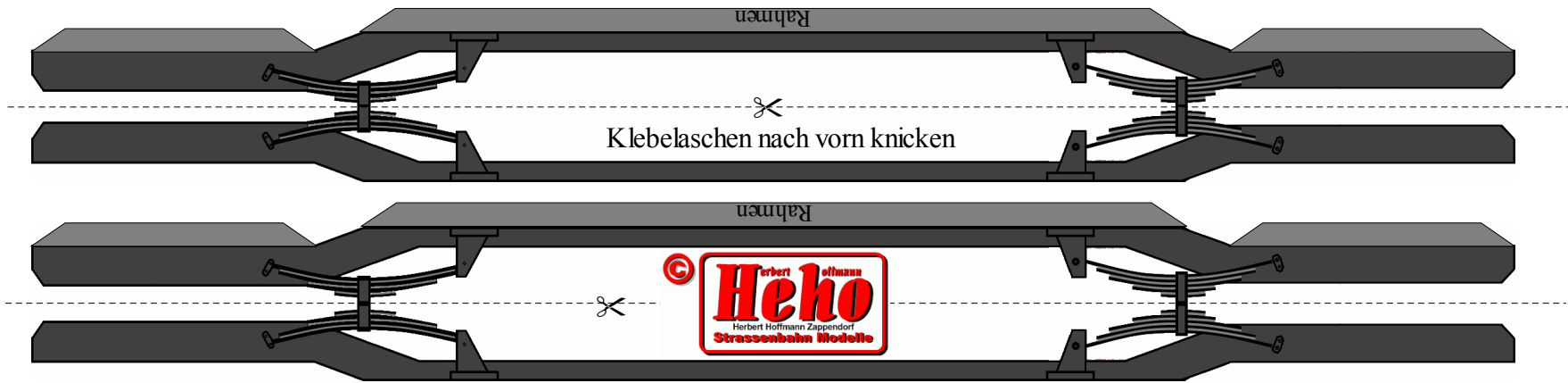
F3

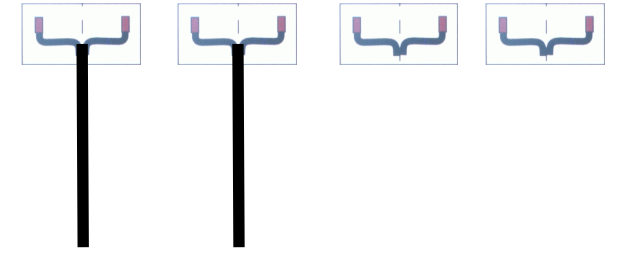
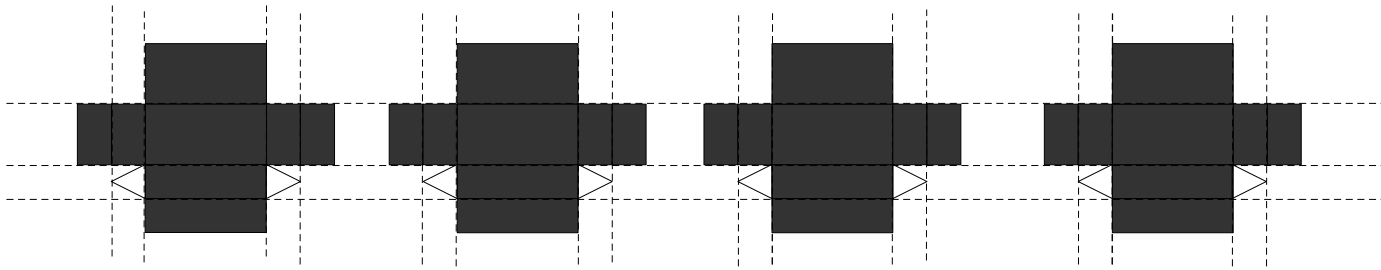
R4



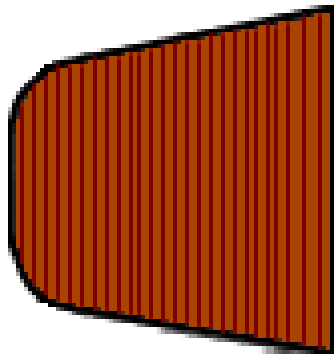
F3



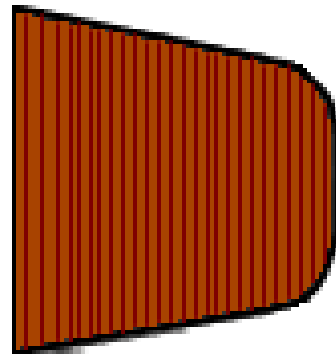




Trittbretter



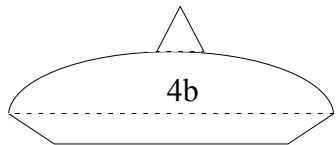
4a



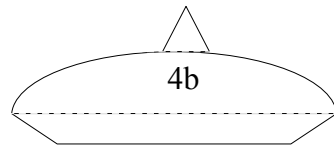
2a



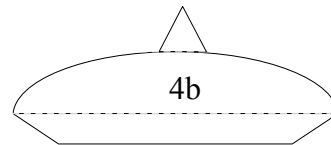
2a
Versteifung
für
Wagenkasten



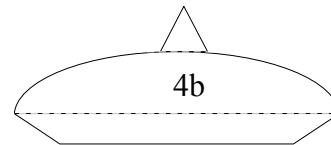
4b



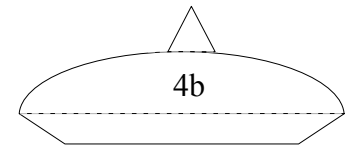
4b



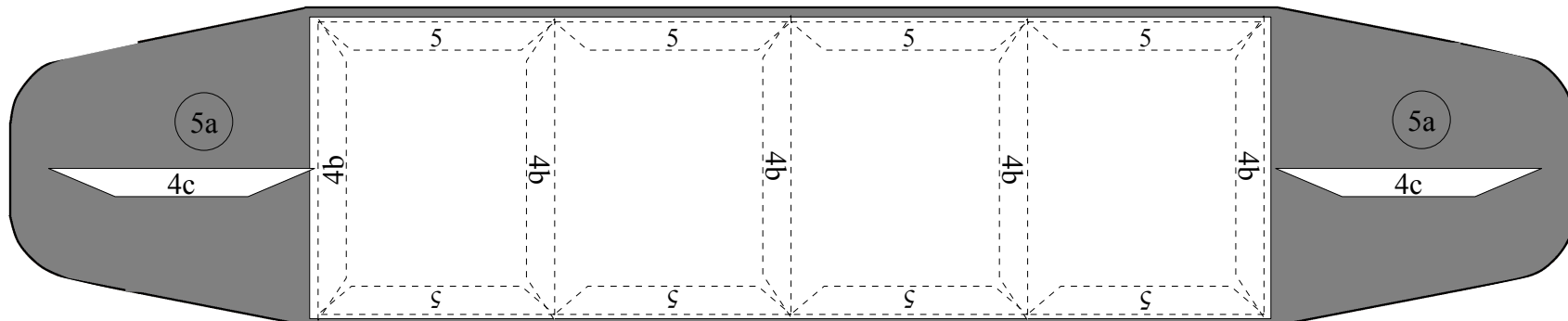
4b



4b



4b



5a

4c

4b

4b

4b

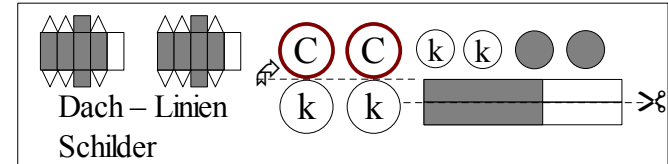
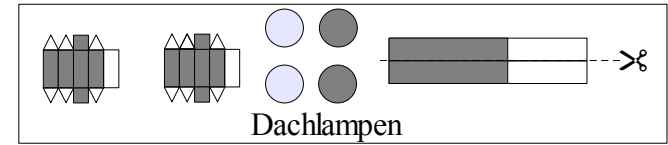
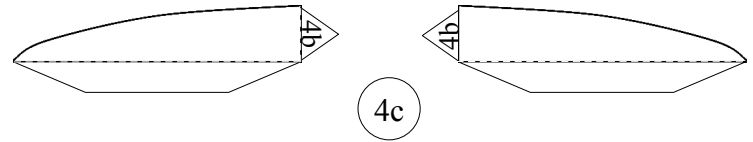
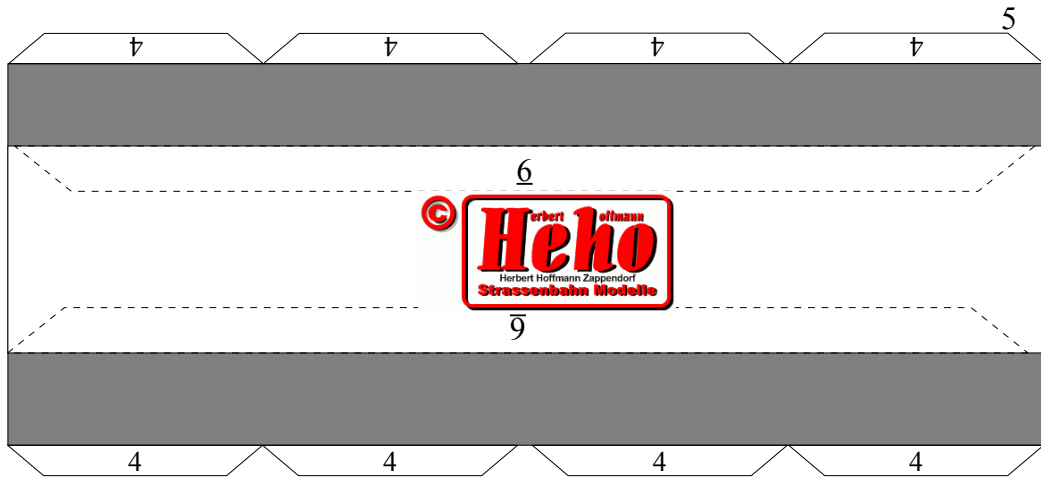
4b

4b

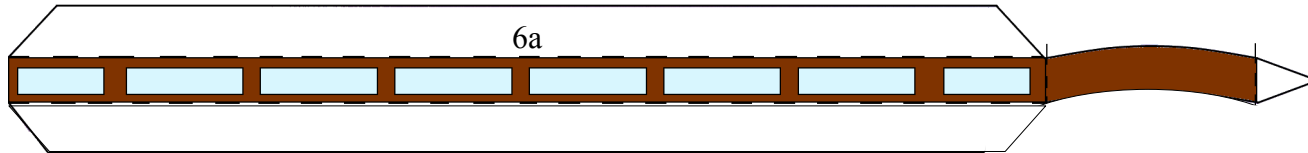
5a

4c

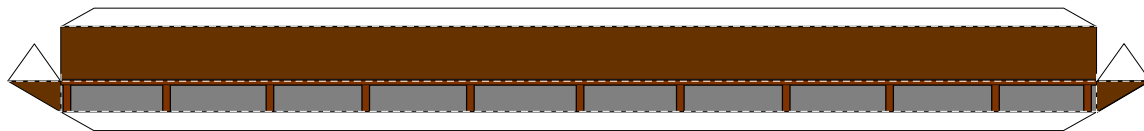
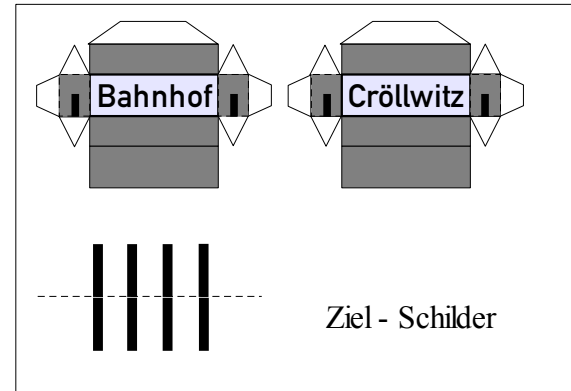
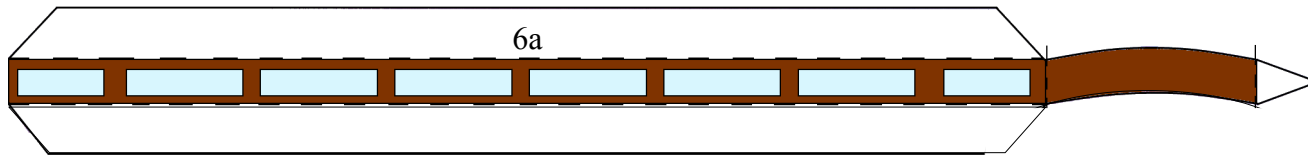
4



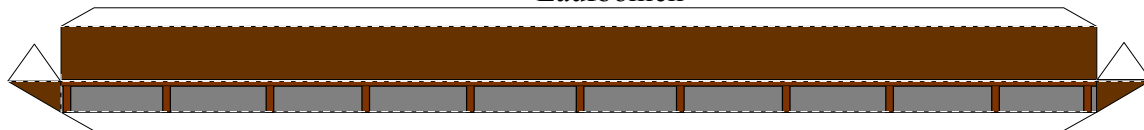
Die mit k gekentzeichneten Flächen zusammen kleben



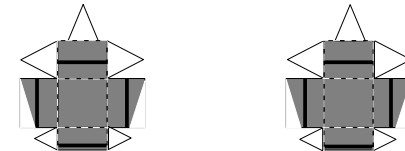
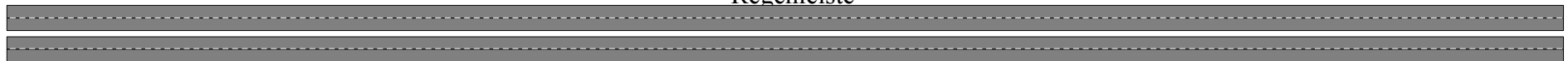
6



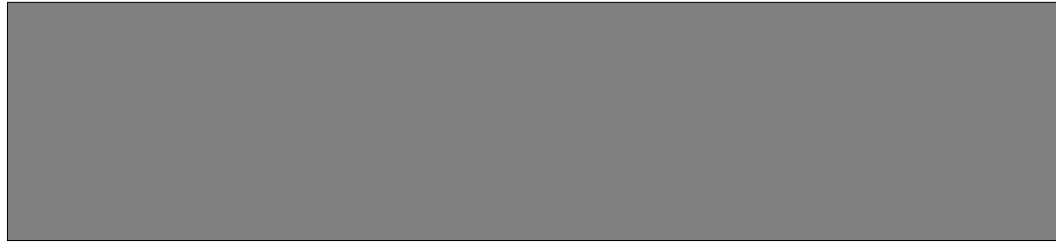
Laufbohlen



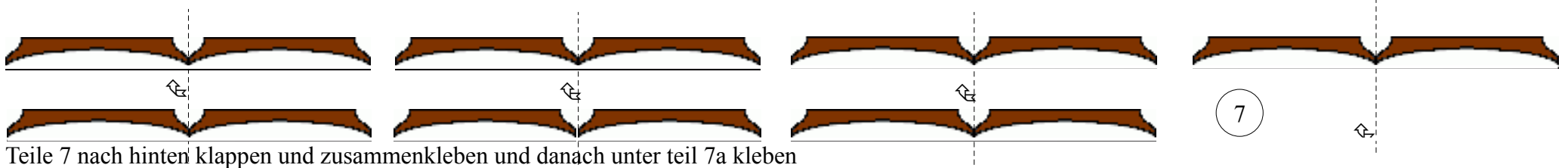
Regenleiste



6



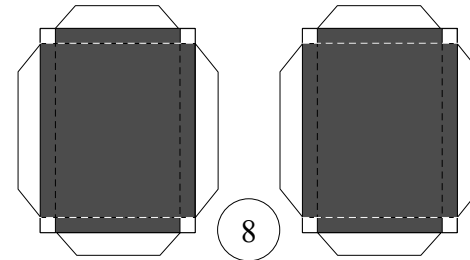
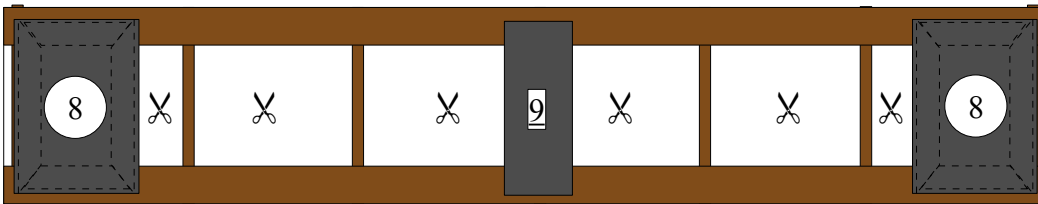
6a



7

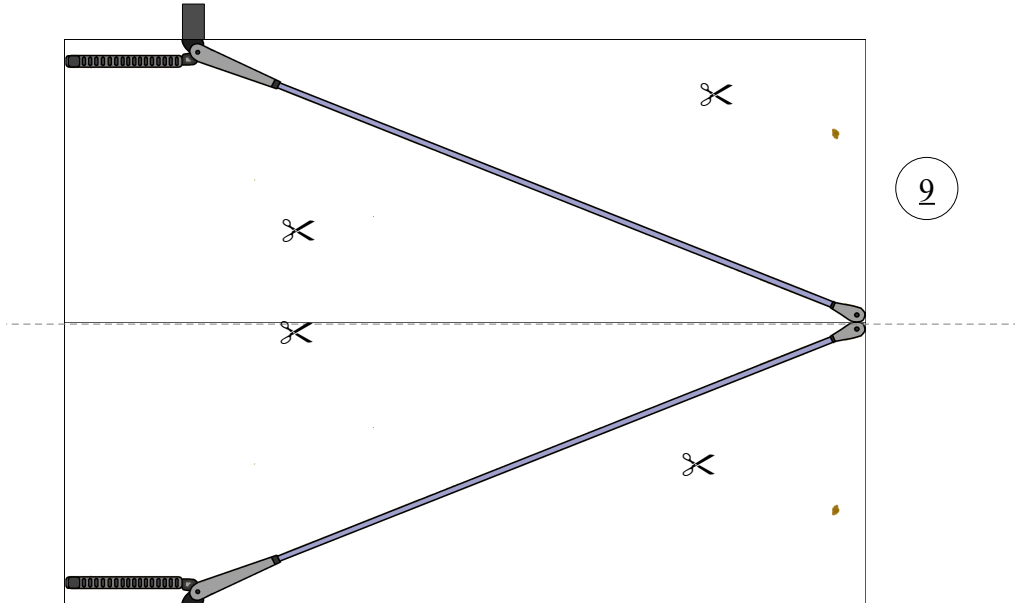
Teile 7 nach hinten klappen und zusammenkleben und danach unter teil 7a kleben

7a



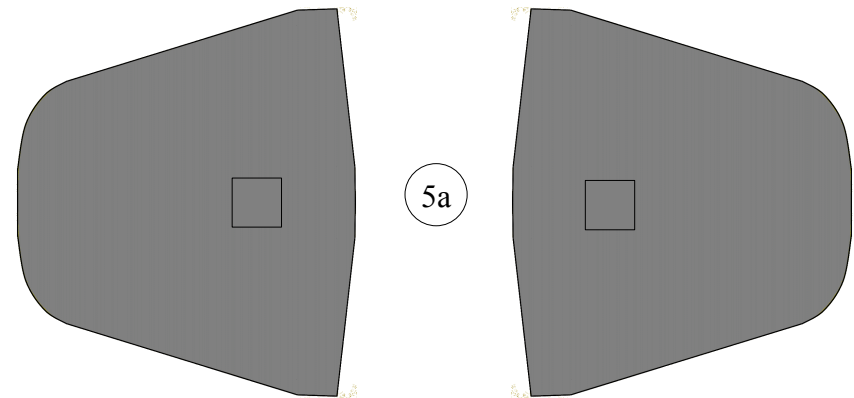
8

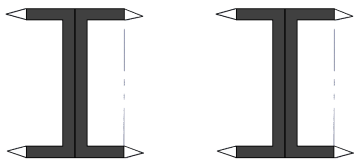
9



Klebelaschen nach vorn knicken

5a

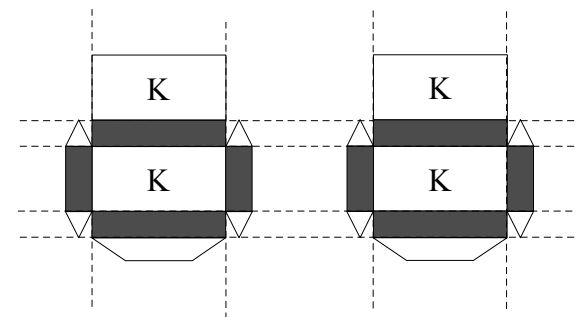
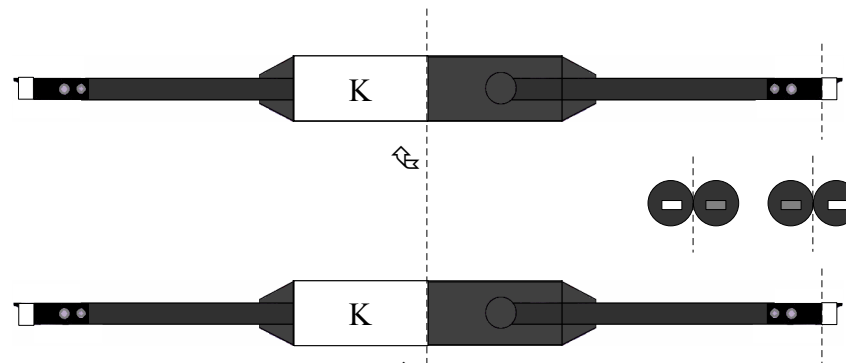




Kupplungshalter



Bügelhalter



Wahlweise Trichter oder Albrecht – Kupplung

